

+++++++>>

2016.10.23.1.33.PM

let's investigate...

## Unexpected runtime error

The runtime has encountered an unexpected error.

## Error source

**Page Name:** /xpadddepartmentsdb2accounts.xsp

**Control Id:** button4

**Property:** onclick

## Exception

Error while executing JavaScript action expression

Script interpreter error, line=1, col=26: Error calling method 'doCreateDB2Departments()' on java class 'com.dokoll.solutions.inc.db2.test.DB2CreateDepartmentsBean'

### JavaScript code

```
1: DB2CreateDepartmentsBean.doCreateDB2Departments ()
```

### ▼ Stack Trace

```
javax.faces.FacesException: Error while executing JavaScript action expression
com.sun.faces.lifecycle.InvokeApplicationPhase.execute (InvokeApplicationPhase.java:102)
    com.sun.faces.lifecycle.LifecycleImpl.phase (LifecycleImpl.java:210)
    com.sun.faces.lifecycle.LifecycleImpl.execute (LifecycleImpl.java:96)
com.ibm.xsp.controller.FacesControllerImpl.execute (FacesControllerImpl.java:256)
    com.ibm.xsp.webapp.FacesServlet.serviceView (FacesServlet.java:228)
    com.ibm.xsp.webapp.FacesServletEx.serviceView (FacesServletEx.java:157)
    com.ibm.xsp.webapp.FacesServlet.service (FacesServlet.java:160)
    com.ibm.xsp.webapp.FacesServletEx.service (FacesServletEx.java:138)
    com.ibm.xsp.webapp.DesignerFacesServlet.service (DesignerFacesServlet.java:103)
com.ibm.designer.runtime.domino.adapter.ComponentModule.invokeServlet (ComponentModule.java:576)
com.ibm.domino.xsp.module.nsf.NSFComponentModule.invokeServlet (NSFComponentModule.java:1281)
com.ibm.designer.runtime.domino.adapter.ComponentModule$AdapterInvoker.invokeServlet (ComponentModule.java:853)
com.ibm.designer.runtime.domino.adapter.ComponentModule$ServletInvoker.doService (ComponentModule.java:796)
com.ibm.designer.runtime.domino.adapter.ComponentModule.doService (ComponentModule.java:565)
```

```
com.ibm.domino.xsp.module.nsf.NSFComponentModule.doService(NSFComponentModule.java:1265)

com.ibm.domino.xsp.module.nsf.NSFService.doServiceInternal(NSFService.java:661)
    com.ibm.domino.xsp.module.nsf.NSFService.doService(NSFService.java:481)

com.ibm.designer.runtime.domino.adapter.LCDEnvironment.doService(LCDEnvironment.java:350)

com.ibm.designer.runtime.domino.adapter.LCDEnvironment.service(LCDEnvironment.java:306)

com.ibm.domino.xsp.bridge.http.engine.XspCmdManager.service(XspCmdManager.java:272)
)
com.ibm.xsp.exception.EvaluationExceptionEx: Error while executing JavaScript
action expression

com.ibm.xsp.binding.javascript.JavaScriptMethodBinding.invoke(JavaScriptMethodBinding.java:126)

com.ibm.xsp.application.ActionListenerImpl.processAction(ActionListenerImpl.java:60)
    javax.faces.component.UICommand.broadcast(UICommand.java:324)
    com.ibm.xsp.component.UIEventHandler.broadcast(UIEventHandler.java:366)
    com.ibm.xsp.component.UIViewRootEx.broadcast(UIViewRootEx.java:1535)
    javax.faces.component.UIViewRoot.broadcastEvents(UIViewRoot.java:307)
    javax.faces.component.UIViewRoot.processApplication(UIViewRoot.java:428)

com.sun.faces.lifecycle.InvokeApplicationPhase.execute(InvokeApplicationPhase.java:94)
    com.sun.faces.lifecycle.LifecycleImpl.phase(LifecycleImpl.java:210)
    com.sun.faces.lifecycle.LifecycleImpl.execute(LifecycleImpl.java:96)

com.ibm.xsp.controller.FacesControllerImpl.execute(FacesControllerImpl.java:256)
    com.ibm.xsp.webapp.FacesServlet.serviceView(FacesServlet.java:228)
    com.ibm.xsp.webapp.FacesServletEx.serviceView(FacesServletEx.java:157)
    com.ibm.xsp.webapp.FacesServlet.service(FacesServlet.java:160)
    com.ibm.xsp.webapp.FacesServletEx.service(FacesServletEx.java:138)
    com.ibm.xsp.webapp.DesignerFacesServlet.service(DesignerFacesServlet.java:103)

com.ibm.designer.runtime.domino.adapter.ComponentModule.invokeServlet(ComponentModule.java:576)

com.ibm.domino.xsp.module.nsf.NSFComponentModule.invokeServlet(NSFComponentModule.java:1281)

com.ibm.designer.runtime.domino.adapter.ComponentModule$AdapterInvoker.invokeServlet(ComponentModule.java:853)

com.ibm.designer.runtime.domino.adapter.ComponentModule$ServletInvoker.doService(ComponentModule.java:796)

com.ibm.designer.runtime.domino.adapter.ComponentModule.doService(ComponentModule.java:565)

com.ibm.domino.xsp.module.nsf.NSFComponentModule.doService(NSFComponentModule.java:1265)
```

```
com.ibm.domino.xsp.module.nsf.NSFService.doServiceInternal(NSFService.java:661)
  com.ibm.domino.xsp.module.nsf.NSFService.doService(NSFService.java:481)

com.ibm.designer.runtime.domino.adapter.LCDEnvironment.doService(LCDEnvironment.java:350)

com.ibm.designer.runtime.domino.adapter.LCDEnvironment.service(LCDEnvironment.java:306)

com.ibm.domino.xsp.bridge.http.engine.XspCmdManager.service(XspCmdManager.java:272)
)
com.ibm.jscript.InterpretException: Script interpreter error, line=1, col=26:
Error calling method 'doCreateDB2Departments()' on java class
'com.dokoll.solutions.inc.db2.test.DB2CreateDepartmentsBean'
  com.ibm.jscript.types.JavaAccessObject.call(JavaAccessObject.java:334)
  com.ibm.jscript.types.FBSObject.call(FBSObject.java:161)
  com.ibm.jscript.ASTTree.ASTCall.interpret(ASTCall.java:197)
  com.ibm.jscript.ASTTree.ASTProgram.interpret(ASTProgram.java:119)
  com.ibm.jscript.ASTTree.ASTProgram.interpretEx(ASTProgram.java:139)
  com.ibm.jscript.JSExpression._interpretExpression(JSExpression.java:435)
  com.ibm.jscript.JSExpression.access$1(JSExpression.java:424)
  com.ibm.jscript.JSExpression$2.run(JSExpression.java:414)
  java.security.AccessController.doPrivileged(AccessController.java:310)
  com.ibm.jscript.JSExpression.interpretExpression(JSExpression.java:410)
  com.ibm.jscript.JSExpression.evaluateValue(JSExpression.java:251)
  com.ibm.jscript.JSExpression.evaluateValue(JSExpression.java:234)

com.ibm.xsp.javascript.JavaScriptInterpreter.interpret(JavaScriptInterpreter.java:222)

com.ibm.xsp.binding.javascript.JavaScriptMethodBinding.invoke(JavaScriptMethodBinding.java:111)

com.ibm.xsp.application.ActionListenerImpl.processAction(ActionListenerImpl.java:60)
  javax.faces.component.UICommand.broadcast(UICommand.java:324)
  com.ibm.xsp.component.UIEventHandler.broadcast(UIEventHandler.java:366)
  com.ibm.xsp.component.UIViewRootEx.broadcast(UIViewRootEx.java:1535)
  javax.faces.component.UIViewRoot.broadcastEvents(UIViewRoot.java:307)
  javax.faces.component.UIViewRoot.processApplication(UIViewRoot.java:428)

com.sun.faces.lifecycle.InvokeApplicationPhase.execute(InvokeApplicationPhase.java:94)
  com.sun.faces.lifecycle.LifecycleImpl.phase(LifecycleImpl.java:210)
  com.sun.faces.lifecycle.LifecycleImpl.execute(LifecycleImpl.java:96)

com.ibm.xsp.controller.FacesControllerImpl.execute(FacesControllerImpl.java:256)
  com.ibm.xsp.webapp.FacesServlet.serviceView(FacesServlet.java:228)
  com.ibm.xsp.webapp.FacesServletEx.serviceView(FacesServletEx.java:157)
  com.ibm.xsp.webapp.FacesServlet.service(FacesServlet.java:160)
  com.ibm.xsp.webapp.FacesServletEx.service(FacesServletEx.java:138)
  com.ibm.xsp.webapp.DesignerFacesServlet.service(DesignerFacesServlet.java:103)

com.ibm.designer.runtime.domino.adapter.ComponentModule.invokeServlet(ComponentModule.java:576)

com.ibm.domino.xsp.module.nsf.NSFComponentModule.invokeServlet(NSFComponentModule.java:1281)
```

```
com.ibm.designer.runtime.domino.adapter.ComponentModule$AdapterInvoker.invokeServlet (ComponentModule.java:853)

com.ibm.designer.runtime.domino.adapter.ComponentModule$ServletInvoker.doService (ComponentModule.java:796)

com.ibm.designer.runtime.domino.adapter.ComponentModule.doService (ComponentModule.java:565)

com.ibm.domino.xsp.module.nsf.NSFComponentModule.doService (NSFComponentModule.java:1265)

com.ibm.domino.xsp.module.nsf.NSFService.doServiceInternal (NSFService.java:661)
    com.ibm.domino.xsp.module.nsf.NSFService.doService (NSFService.java:481)

com.ibm.designer.runtime.domino.adapter.LCDEnvironment.doService (LCDEnvironment.java:350)

com.ibm.designer.runtime.domino.adapter.LCDEnvironment.service (LCDEnvironment.java:306)

com.ibm.domino.xsp.bridge.http.engine.XspCmdManager.service (XspCmdManager.java:272)
)
java.lang.NullPointerException

com.dokoll.solutions.inc.db2.test.DB2CreateDepartmentsBean.doCreateDB2Departments (DB2CreateDepartmentsBean.java:54)
    sun.reflect.NativeMethodAccessorImpl.invoke0 (Native Method)
    sun.reflect.NativeMethodAccessorImpl.invoke (NativeMethodAccessorImpl.java:60)

sun.reflect.DelegatingMethodAccessorImpl.invoke (DelegatingMethodAccessorImpl.java:37)
    java.lang.reflect.Method.invoke (Method.java:611)
    com.ibm.jscrip.types.JavaAccessObject.call (JavaAccessObject.java:321)
    com.ibm.jscrip.types.FBSObject.call (FBSObject.java:161)
    com.ibm.jscrip.ASTTree.ASTCall.interpret (ASTCall.java:197)
    com.ibm.jscrip.ASTTree.ASTProgram.interpret (ASTProgram.java:119)
    com.ibm.jscrip.ASTTree.ASTProgram.interpretEx (ASTProgram.java:139)
    com.ibm.jscrip.JSExpression._interpretExpression (JSExpression.java:435)
    com.ibm.jscrip.JSExpression.access$1 (JSExpression.java:424)
    com.ibm.jscrip.JSExpression$2.run (JSExpression.java:414)
    java.security.AccessController.doPrivileged (AccessController.java:310)
    com.ibm.jscrip.JSExpression.interpretExpression (JSExpression.java:410)
    com.ibm.jscrip.JSExpression.evaluateValue (JSExpression.java:251)
    com.ibm.jscrip.JSExpression.evaluateValue (JSExpression.java:234)

com.ibm.xsp.javascript.JavaScriptInterpreter.interpret (JavaScriptInterpreter.java:222)

com.ibm.xsp.binding.javascript.JavaScriptMethodBinding.invoke (JavaScriptMethodBinding.java:111)

com.ibm.xsp.application.ActionListenerImpl.processAction (ActionListenerImpl.java:60)
    javax.faces.component.UICommand.broadcast (UICommand.java:324)
    com.ibm.xsp.component.UIEventHandler.broadcast (UIEventHandler.java:366)
    com.ibm.xsp.component.UIViewRootEx.broadcast (UIViewRootEx.java:1535)
    javax.faces.component.UIViewRoot.broadcastEvents (UIViewRoot.java:307)
```

```
    javax.faces.component.UIViewRoot.processApplication(UIViewRoot.java:428)
com.sun.faces.lifecycle.InvokeApplicationPhase.execute(InvokeApplicationPhase.java:94)
    com.sun.faces.lifecycle.LifecycleImpl.phase(LifecycleImpl.java:210)
    com.sun.faces.lifecycle.LifecycleImpl.execute(LifecycleImpl.java:96)
com.ibm.xsp.controller.FacesControllerImpl.execute(FacesControllerImpl.java:256)
    com.ibm.xsp.webapp.FacesServlet.serviceView(FacesServlet.java:228)
    com.ibm.xsp.webapp.FacesServletEx.serviceView(FacesServletEx.java:157)
    com.ibm.xsp.webapp.FacesServlet.service(FacesServlet.java:160)
    com.ibm.xsp.webapp.FacesServletEx.service(FacesServletEx.java:138)
    com.ibm.xsp.webapp.DesignerFacesServlet.service(DesignerFacesServlet.java:103)
com.ibm.designer.runtime.domino.adapter.ComponentModule.invokeServlet(ComponentModule.java:576)
com.ibm.domino.xsp.module.nsf.NSFComponentModule.invokeServlet(NSFComponentModule.java:1281)
com.ibm.designer.runtime.domino.adapter.ComponentModule$AdapterInvoker.invokeServlet(ComponentModule.java:853)
com.ibm.designer.runtime.domino.adapter.ComponentModule$ServletInvoker.doService(ComponentModule.java:796)
com.ibm.designer.runtime.domino.adapter.ComponentModule.doService(ComponentModule.java:565)
com.ibm.domino.xsp.module.nsf.NSFComponentModule.doService(NSFComponentModule.java:1265)
com.ibm.domino.xsp.module.nsf.NSFService.doServiceInternal(NSFService.java:661)
    com.ibm.domino.xsp.module.nsf.NSFService.doService(NSFService.java:481)
com.ibm.designer.runtime.domino.adapter.LCDEnvironment.doService(LCDEnvironment.java:350)
com.ibm.designer.runtime.domino.adapter.LCDEnvironment.service(LCDEnvironment.java:306)
com.ibm.domino.xsp.bridge.http.engine.XspCmdManager.service(XspCmdManager.java:272)
)
```

that was obviously the Error page generated in the UI for Xpages... Let's look at the Lotus NotesLog-

```
Misc. Event - IBM Notes
File Edit View Create Actions Tools Window Help
Open Search All Mail
Discover Home Notes Log (9) SiteFinal Home Misc. Event
Close
10/23/2016 01:34:17 PM HTTP JVM: ENDING DEBUG | PhantomUserPageBean.java - doLoadPhantomUserPages accessed: xpmlyhomepages.xsp for User PageName Field(s) / Link controls...
10/23/2016 01:34:17 PM HTTP JVM: DEBUG ENDED | PhantomUserPageBean.java - doLoadPhantomUserPages released access to controls...
10/23/2016 01:34:17 PM HTTP JVM: Logout Requested Sun Oct 23 13:34:17 EDT 2016
10/23/2016 01:34:17 PM HTTP JVM: Logging Out... Sun Oct 23 13:34:17 EDT 2016
10/23/2016 01:34:17 PM HTTP JVM: Session Ended... Sun Oct 23 13:34:17 EDT 2016
10/23/2016 01:34:17 PM HTTP JVM: Logged out of D7?u Content
10/23/2016 01:34:17 PM HTTP JVM: BEGIN DEBUG | SecurityAccessOkay started...
10/23/2016 01:34:17 PM HTTP JVM: docucontent.nsf | SecurityAccessOkay() in LoginAppBean.java Session Obtained...CN=Dokoll Solutions/O=Dokoll Solutions
10/23/2016 01:34:17 PM HTTP JVM: docucontent.nsf | SecurityAccessOkay() in LoginAppBean.java finding D7?uContent.nsf based on Session...
10/23/2016 01:34:17 PM HTTP JVM: SecurityAccessOkay() in LoginAppBean.java Fetched Database...docucontent.nsf
10/23/2016 01:34:17 PM HTTP JVM: Getting a database connection...
10/23/2016 01:34:17 PM HTTP JVM: PhantomUserPageBean.java | SecurityAccessOkay Connected to docucontent.nsf
10/23/2016 01:34:17 PM HTTP JVM: PhantomUserPageBean.java | SecurityAccessOkay Connected to SecurityAccessView
10/23/2016 01:34:17 PM HTTP JVM: PhantomUserPageBean.java | SecurityAccessOkay() - ViewEntryCollection Counts Obtained...
10/23/2016 01:34:17 PM HTTP JVM: PhantomUserPageBean.java | SecurityAccessOkay() - ViewEntries 1 Account(s)
10/23/2016 01:34:17 PM HTTP JVM: PhantomUserPageBean.java | SecurityAccessOkay() - ViewEntryCollection completed successfully...
10/23/2016 01:34:17 PM HTTP JVM: END DEBUG | SecurityAccessOkay releasing access to controls...
10/23/2016 01:34:17 PM HTTP JVM: User Access Okay() for...xplookandfeel.xsp
10/23/2016 01:34:17 PM HTTP JVM: User Access Okay() for...xpmlyhomepages.xsp
10/23/2016 01:36:50 PM HTTP JVM: sfter: PhaseListener
10/23/2016 01:36:50 PM HTTP JVM: loggedIn Phase Listener block based on Login.java...null
10/23/2016 01:36:50 PM HTTP JVM: Entering actual connection...
10/23/2016 01:36:50 PM HTTP JVM: DB2Connector Connection Started...
10/23/2016 01:36:50 PM HTTP JVM: java.lang.ClassNotFoundException: COM.ibm.db2.jdbc.app.DB2Driver
10/23/2016 01:36:50 PM HTTP JVM: at java.lang.Class.forNameImpl(Native Method)
10/23/2016 01:36:50 PM HTTP JVM: at java.lang.Class.forName(Class.java:141)
10/23/2016 01:36:50 PM HTTP JVM: at com.dokoll.solutions.inc.development.Utils.DB2Connector.getConnection(DB2Connector.java:45)
10/23/2016 01:36:50 PM HTTP JVM: at com.dokoll.solutions.inc.db2.test.DB2CreateDepartmentsBean.doCreateDB2Departments(DB2CreateDepartmentsBean.java:52)
10/23/2016 01:36:50 PM HTTP JVM: at sun.reflect.NativeMethodAccessorImpl.invoke0(Native Method)
10/23/2016 01:36:50 PM HTTP JVM: at sun.reflect.NativeMethodAccessorImpl.invoke(NativeMethodAccessorImpl.java:60)
10/23/2016 01:36:50 PM HTTP JVM: at sun.reflect.DelegatingMethodAccessorImpl.invoke(DelegatingMethodAccessorImpl.java:37)
10/23/2016 01:36:50 PM HTTP JVM: at java.lang.reflect.Method.invoke(Method.java:611)
10/23/2016 01:36:50 PM HTTP JVM: at com.ibm.jsp.script.types.JavaAccessObject.call(JavaAccessObject.java:321)
10/23/2016 01:36:50 PM HTTP JVM: at com.ibm.jsp.script.types.FBSObject.call(FBSObject.java:161)
10/23/2016 01:36:50 PM HTTP JVM: at com.ibm.jsp.script.ASTTree.ASTCall.interpret(ASTCall.java:197)
10/23/2016 01:36:50 PM HTTP JVM: at com.ibm.jsp.script.ASTTree.ASTProgram.interpret(ASTProgram.java:119)
10/23/2016 01:36:50 PM HTTP JVM: at com.ibm.jsp.script.ASTTree.ASTProgram.interpret(ASTProgram.java:120)
```

DB2 connection not proper... suspecting it is because the jar files are not in the right location... looks like some stuff got through okay though...

**Miscellaneous Events:**

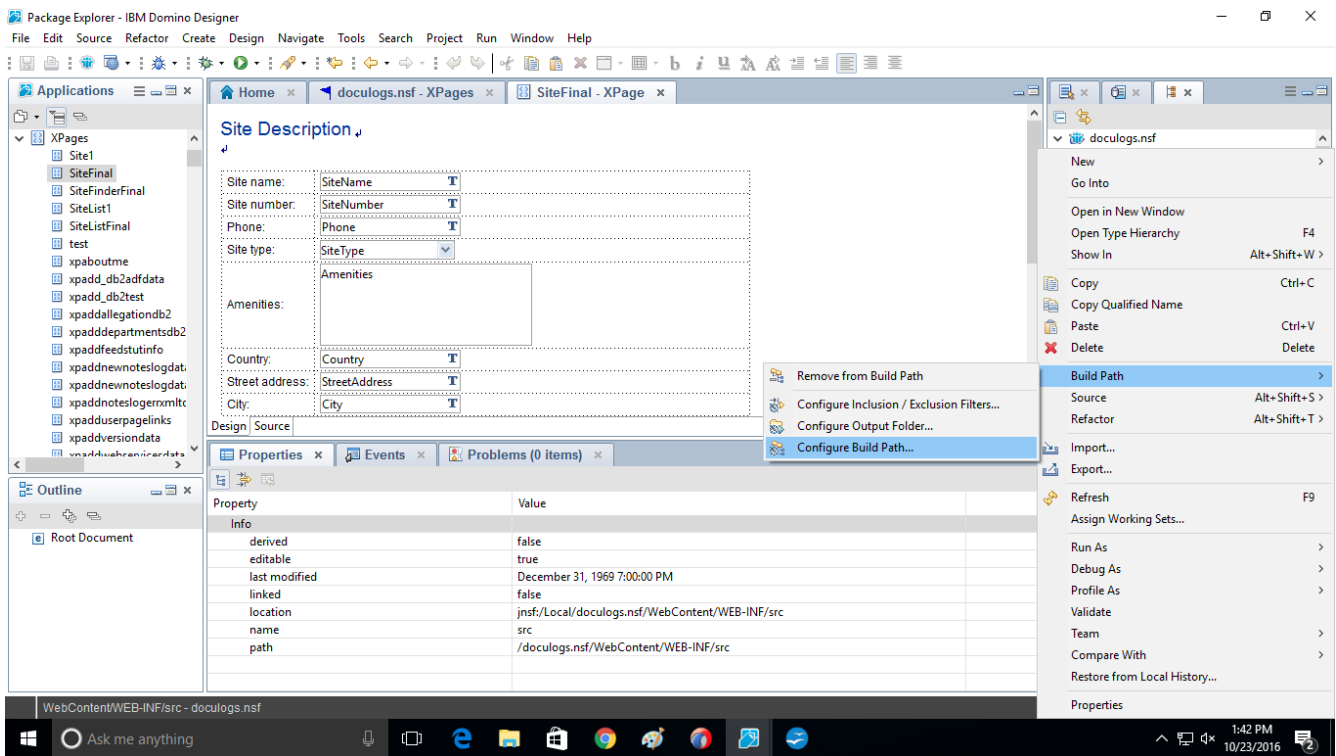
```
10/23/2016 01:33:19 PM HTTP JVM: PhantomPageBean.java - doLoadPanthomPages accessed: Page Look and Feel for User ViewURL M
10/23/2016 01:33:19 PM HTTP JVM: ENDING DEBUG | PhantomPageBean.java - doLoadPanthomPages accessed: xplookandfeel.xsp for
10/23/2016 01:33:19 PM HTTP JVM: DEBUG ENDED | PhantomPageBean.java - doLoadPanthomPages released access to controls...
10/23/2016 01:33:19 PM HTTP JVM: PhantomUserPageBean! Found this UserNameValue Cookie...AlienHouse
10/23/2016 01:33:19 PM HTTP JVM: ...
10/23/2016 01:33:19 PM HTTP JVM: PhantomUserPageBean! Found this RoleNameValue Cookie...Admin
10/23/2016 01:33:19 PM HTTP JVM: ...
10/23/2016 01:33:19 PM HTTP JVM: ...
10/23/2016 01:33:19 PM HTTP JVM: ...
10/23/2016 01:33:19 PM HTTP JVM: ...
10/23/2016 01:33:19 PM HTTP JVM: ...
10/23/2016 01:33:19 PM HTTP JVM: ...
10/23/2016 01:33:19 PM HTTP JVM: ...
10/23/2016 01:33:19 PM HTTP JVM: ...
10/23/2016 01:33:19 PM HTTP JVM: ...
10/23/2016 01:33:19 PM HTTP JVM: BEGIN DEBUG | PhantomPageBean.java - doLoadPanthomPages started...
10/23/2016 01:33:19 PM HTTP JVM: docucontent.nsf | doLoadPhantomUserPages() in PhantomPageBean.java Session Obtained...CN=D
10/23/2016 01:33:19 PM HTTP JVM: docucontent.nsf | doLoadPhantomUserPages() in PhantomUserPageBean.java finding docucontent.n
10/23/2016 01:33:19 PM HTTP JVM: doLoadPhantomUserPages() in PhantomUserPageBean.java Fetched Database...docucontent.nsf
10/23/2016 01:33:19 PM HTTP JVM: Getting a database connection...
10/23/2016 01:33:19 PM HTTP JVM: PhantomUserPageBean.java | doLoadPhantomUserPages Connected to docucontent.nsf
10/23/2016 01:33:19 PM HTTP JVM: PhantomUserPageBean.java | doLoadPhantomUserPages Connected to AllUserURLSecurityAccessV
10/23/2016 01:33:19 PM HTTP JVM: Cookie Value in SubscriptionPageBean AlienHouse
10/23/2016 01:33:19 PM HTTP JVM: SubscriptionPageBean.java | ViewEntryCollection Counts Obtained...
10/23/2016 01:33:19 PM HTTP JVM: SubscriptionPageBean.java | All ViewEntries 2 Account(s)
10/23/2016 01:33:19 PM HTTP JVM: SubscriptionPageBean.java | ViewEntryCollection completed successfully...
10/23/2016 01:33:19 PM HTTP JVM: END DEBUG | SubscriptionPageBean.java - doLoadSubscriptions releasing access to controls...
10/23/2016 01:33:19 PM HTTP JVM: END DEBUG | SubscriptionPageBean.java - doLoadSubscriptions releasing access to controls...
10/23/2016 01:33:19 PM HTTP JVM: PhantomUserPageBean.java | ViewEntryCollection Counts Obtained...
10/23/2016 01:33:19 PM HTTP JVM: PhantomUserPageBean.java | ViewEntries 1 Account(s)
10/23/2016 01:33:19 PM HTTP JVM: PhantomUserPageBean.java | ViewEntryCollection completed successfully...
10/23/2016 01:33:19 PM HTTP JVM: PhantomUserPageBean.java - doLoadPhantomUserPages accessed: AlienHouse for User Name Field(s) / Link controls...
```

10/23/2016 01:33:19 PM HTTP JVM: PhantomUserPageBean.java - doLoadPhantomUserPages accessed: Admin for User URL Field(s) / L  
10/23/2016 01:33:19 PM HTTP JVM: PhantomUserPageBean.java - doLoadPhantomUserPages accessed: xpmyhomepages.xsp for User  
10/23/2016 01:33:19 PM HTTP JVM: ENDING DEBUG | PhantomUserPageBean.java - doLoadPhantomUserPages accessed: xpmyhomepages.xsp for User  
10/23/2016 01:33:19 PM HTTP JVM: DEBUG ENDED | PhantomUserPageBean.java - doLoadPhantomUserPages released access to controls.  
10/23/2016 01:33:19 PM HTTP JVM: Logout Requested Sun Oct 23 13:33:19 EDT 2016  
10/23/2016 01:33:19 PM HTTP JVM: Logging Out... Sun Oct 23 13:33:19 EDT 2016  
10/23/2016 01:33:19 PM HTTP JVM: Session Ended...Sun Oct 23 13:33:19 EDT 2016  
10/23/2016 01:33:19 PM HTTP JVM: Logged out of D?cu Content  
10/23/2016 01:33:19 PM HTTP JVM: BEGIN DEBUG | SecurityAccessOkay started...  
10/23/2016 01:33:19 PM HTTP JVM: docucontent.nsf | SecurityAccessOkay() in LoginAppBean.java Session Obtained...CN=Dököll Solution  
10/23/2016 01:33:19 PM HTTP JVM: docucontent.nsf | SecurityAccessOkay() in LoginAppBean.java finding D?cuContent.nsf based on Ses  
10/23/2016 01:33:19 PM HTTP JVM: SecurityAccessOkay() in LoginAppBean.java Fetched Database...docucontent.nsf  
10/23/2016 01:33:19 PM HTTP JVM: Getting a database connection...  
10/23/2016 01:33:19 PM HTTP JVM: PhantomUserPageBean.java | SecurityAccessOkay Connected to docucontent.nsf  
10/23/2016 01:33:19 PM HTTP JVM: PhantomUserPageBean.java | SecurityAccessOkay Connected to SecurityAccessView  
10/23/2016 01:33:19 PM HTTP JVM: PhantomUserPageBean.java | SecurityAccessOkay() - ViewEntryCollection Counts Obtained...  
10/23/2016 01:33:19 PM HTTP JVM: PhantomUserPageBean.java | SecurityAccessOkay() - ViewEntries 1 Account(s)  
10/23/2016 01:33:19 PM HTTP JVM: PhantomUserPageBean.java | SecurityAccessOkay() - ViewEntryCollection completed successfully...  
10/23/2016 01:33:19 PM HTTP JVM: END DEBUG | SecurityAccessOkay releasing access to controls...  
10/23/2016 01:33:19 PM HTTP JVM: View Obtained...UserFeedsReportViewListings  
10/23/2016 01:33:19 PM HTTP JVM: RetrieveNewUserVideoTutBackingBean | Document Obtained...41A006489012113485257E9B00023  
10/23/2016 01:33:19 PM HTTP JVM: User Access Okay() for...xplookandfeel.xsp  
10/23/2016 01:33:19 PM HTTP JVM: User Access Okay() for...xpmyhomepages.xsp  
10/23/2016 01:33:19 PM HTTP JVM: View Obtained...UserAllVideoFeedsSubmitAccessView  
10/23/2016 01:33:19 PM HTTP JVM: RetrieveNewUserVideoTutBackingBean for UserTubeVideosFeedsKeyword | Document Obtained...B  
10/23/2016 01:33:26 PM HTTP JVM: View Obtained...UserAllVideoSubmitAccessView  
10/23/2016 01:33:26 PM HTTP JVM: RetrieveNewUserVideoTutBackingBean | Document Obtained...5434F28F5FBCB4EC85257D15001D  
10/23/2016 01:34:10 PM HTTP JVM: AvatarPageBean! Found this UserNameValue Cookie...AlienHouse  
10/23/2016 01:34:10 PM HTTP JVM: ...  
10/23/2016 01:34:10 PM HTTP JVM: AvatarPageBean! Found this RoleNameValue Cookie...Admin  
10/23/2016 01:34:10 PM HTTP JVM: ...  
10/23/2016 01:34:10 PM HTTP JVM: ...  
10/23/2016 01:34:10 PM HTTP JVM: ...  
10/23/2016 01:34:10 PM HTTP JVM: ...  
10/23/2016 01:34:10 PM HTTP JVM: ...  
10/23/2016 01:34:10 PM HTTP JVM: ...  
10/23/2016 01:34:10 PM HTTP JVM: AvatarPageBean.java | doLoadUserAvatar Connected to doculogs.nsf  
10/23/2016 01:34:10 PM HTTP JVM: AvatarPageBean.java | doLoadUserAvatar Connected to UserAvatarBulletinView  
10/23/2016 01:34:10 PM HTTP JVM: Cookie Value in AvatarPageBean AlienHouse  
10/23/2016 01:34:10 PM HTTP JVM: AvatarPageBean.java | ViewEntryCollection Counts Obtained...  
10/23/2016 01:34:10 PM HTTP JVM: AvatarPageBean.java | All ViewEntries 4 Account(s)  
10/23/2016 01:34:10 PM HTTP JVM: AvatarPageBean.java | ViewEntryCollection completed successfully...  
10/23/2016 01:34:10 PM HTTP JVM: END DEBUG | AvatarPageBean.java - doLoadUserAvatar releasing access to controls...  
10/23/2016 01:34:10 PM HTTP JVM: END DEBUG | AvatarPageBean.java - doLoadUserAvatar releasing access to controls...  
10/23/2016 01:34:10 PM HTTP JVM: END DEBUG | AvatarPageBean.java - doLoadUserAvatar releasing access to controls...  
10/23/2016 01:34:10 PM HTTP JVM: END DEBUG | AvatarPageBean.java - doLoadUserAvatar releasing access to controls...  
10/23/2016 01:34:10 PM HTTP JVM: SubscriptionPageBean! Found this UserNameValue Cookie...AlienHouse  
10/23/2016 01:34:10 PM HTTP JVM: ...  
10/23/2016 01:34:10 PM HTTP JVM: SubscriptionPageBean! Found this RoleNameValue Cookie...Admin  
10/23/2016 01:34:10 PM HTTP JVM: ...  
10/23/2016 01:34:10 PM HTTP JVM: ...  
10/23/2016 01:34:10 PM HTTP JVM: ...  
10/23/2016 01:34:10 PM HTTP JVM: ...  
10/23/2016 01:34:10 PM HTTP JVM: ...  
10/23/2016 01:34:10 PM HTTP JVM: SubscriptionPageBean.java | doLoadSubscriptions Connected to doculogs.nsf  
10/23/2016 01:34:10 PM HTTP JVM: SubscriptionPageBean.java | doLoadSubscriptions Connected to SubscriptionView  
10/23/2016 01:34:10 PM HTTP JVM: Cookie Value in SubscriptionPageBean AlienHouse  
10/23/2016 01:34:10 PM HTTP JVM: SubscriptionPageBean.java | ViewEntryCollection Counts Obtained...  
10/23/2016 01:34:10 PM HTTP JVM: SubscriptionPageBean.java | All ViewEntries 2 Account(s)  
10/23/2016 01:34:10 PM HTTP JVM: SubscriptionPageBean.java | ViewEntryCollection completed successfully...  
10/23/2016 01:34:10 PM HTTP JVM: END DEBUG | SubscriptionPageBean.java - doLoadSubscriptions releasing access to controls...  
10/23/2016 01:34:10 PM HTTP JVM: END DEBUG | SubscriptionPageBean.java - doLoadSubscriptions releasing access to controls...  
10/23/2016 01:34:10 PM HTTP JVM: View Obtained...UserAllVideoFeedsSubmitAccessView

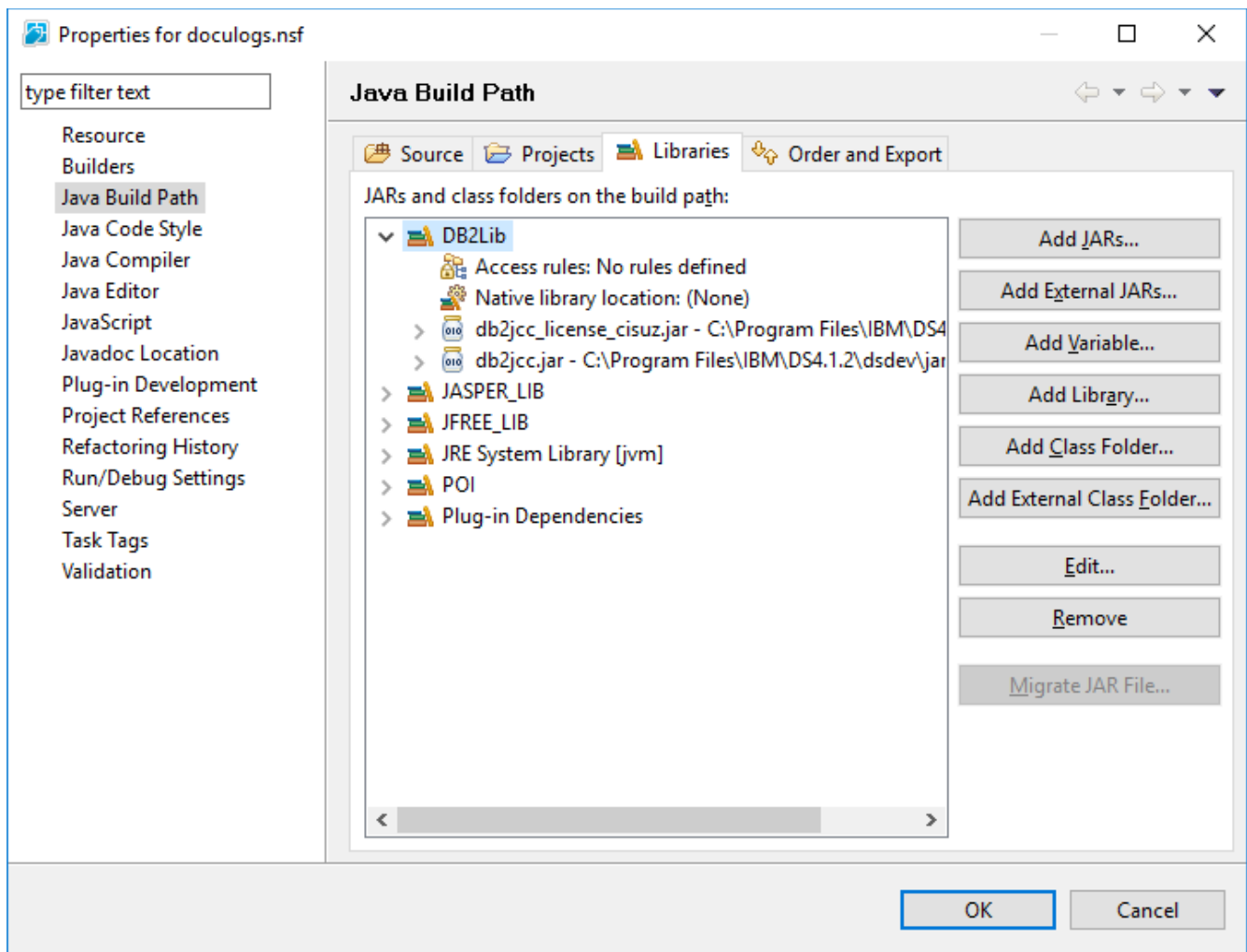
10/23/2016 01:34:10 PM HTTP JVM: RetrieveNewUserVideoTutBackingBean for UserTubeVideosFeedsKeyword | Document Obtained...B  
10/23/2016 01:34:10 PM HTTP JVM: View Obtained...UserFeedsReportViewListings  
10/23/2016 01:34:10 PM HTTP JVM: RetrieveNewUserVideoTutBackingBean | Document Obtained...41A006489012113485257E9B00023  
10/23/2016 01:34:13 PM HTTP JVM: View Obtained...UserAllVideoSubmitAccessView  
10/23/2016 01:34:13 PM HTTP JVM: RetrieveNewUserVideoTutBackingBean | Document Obtained...5434F28F5FBCB4EC85257D15001D  
10/23/2016 01:34:17 PM HTTP JVM: PhantomPageBean! Found this UserNameValue Cookie...AlienHouse  
10/23/2016 01:34:17 PM HTTP JVM: ...  
10/23/2016 01:34:17 PM HTTP JVM: PhantomPageBean! Found this RoleNameValue Cookie...Admin  
10/23/2016 01:34:17 PM HTTP JVM: ...  
10/23/2016 01:34:17 PM HTTP JVM: ...  
10/23/2016 01:34:17 PM HTTP JVM: ...  
10/23/2016 01:34:17 PM HTTP JVM: ...  
10/23/2016 01:34:17 PM HTTP JVM: ...  
10/23/2016 01:34:17 PM HTTP JVM: ...  
10/23/2016 01:34:17 PM HTTP JVM: BEGIN DEBUG | PhantomPageBean.java - doLoadPanthomPages started...  
10/23/2016 01:34:17 PM HTTP JVM: docucontent.nsf | doLoadPanthomPages() in PhantomPageBean.java Session Obtained...CN=Dököll  
10/23/2016 01:34:17 PM HTTP JVM: docucontent.nsf | doLoadPanthomPages() in PhantomPageBean.java finding docucontent.nsf based  
10/23/2016 01:34:17 PM HTTP JVM: doLoadPanthomPages() in PhantomPageBean.java Fetched Database...docucontent.nsf  
10/23/2016 01:34:17 PM HTTP JVM: Getting a database connection...  
10/23/2016 01:34:17 PM HTTP JVM: PhantomPageBean.java | doLoadPanthomPages Connected to docucontent.nsf  
10/23/2016 01:34:17 PM HTTP JVM: PhantomPageBean.java | doLoadPanthomPages Connected to MyURLSecurityAccessView  
10/23/2016 01:34:17 PM HTTP JVM: PhantomPageBean.java | ViewEntryCollection Counts Obtained...  
10/23/2016 01:34:17 PM HTTP JVM: PhantomPageBean.java | ViewEntries 1 Account(s)  
10/23/2016 01:34:17 PM HTTP JVM: PhantomPageBean.java | ViewEntryCollection completed successfully...  
10/23/2016 01:34:17 PM HTTP JVM: PhantomPageBean.java - doLoadPanthomPages accessed: AlienHouse for UserName Field(s) / Link  
10/23/2016 01:34:17 PM HTTP JVM: PhantomPageBean.java - doLoadPanthomPages accessed: Admin for User URL Field(s) / Link contro  
10/23/2016 01:34:17 PM HTTP JVM: PhantomPageBean.java - doLoadPanthomPages accessed: Page Look and Feel for User ViewURL M  
10/23/2016 01:34:17 PM HTTP JVM: ENDING DEBUG | PhantomPageBean.java - doLoadPanthomPages accessed: xplookandfeel.xsp for  
10/23/2016 01:34:17 PM HTTP JVM: DEBUG ENDED | PhantomPageBean.java - doLoadPanthomPages released access to controls...  
10/23/2016 01:34:17 PM HTTP JVM: PhantomUserPageBean! Found this UserNameValue Cookie...AlienHouse  
10/23/2016 01:34:17 PM HTTP JVM: ...  
10/23/2016 01:34:17 PM HTTP JVM: PhantomUserPageBean! Found this RoleNameValue Cookie...Admin  
10/23/2016 01:34:17 PM HTTP JVM: ...  
10/23/2016 01:34:17 PM HTTP JVM: ...  
10/23/2016 01:34:17 PM HTTP JVM: ...  
10/23/2016 01:34:17 PM HTTP JVM: ...  
10/23/2016 01:34:17 PM HTTP JVM: ...  
10/23/2016 01:34:17 PM HTTP JVM: ...  
10/23/2016 01:34:17 PM HTTP JVM: BEGIN DEBUG | PhantomPageBean.java - doLoadPanthomPages started...  
10/23/2016 01:34:17 PM HTTP JVM: docucontent.nsf | doLoadPhantomUserPages() in PhantomPageBean.java Session Obtained...CN=D  
10/23/2016 01:34:17 PM HTTP JVM: docucontent.nsf | doLoadPhantomUserPages() in PhantomUserPageBean.java finding docucontent.n  
10/23/2016 01:34:17 PM HTTP JVM: doLoadPhantomUserPages() in PhantomUserPageBean.java Fetched Database...docucontent.nsf  
10/23/2016 01:34:17 PM HTTP JVM: Getting a database connection...  
10/23/2016 01:34:17 PM HTTP JVM: PhantomUserPageBean.java | doLoadPhantomUserPages Connected to docucontent.nsf  
10/23/2016 01:34:17 PM HTTP JVM: PhantomUserPageBean.java | doLoadPhantomUserPages Connected to AllUserURLSecurityAccessV  
10/23/2016 01:34:17 PM HTTP JVM: PhantomUserPageBean.java | ViewEntryCollection Counts Obtained...  
10/23/2016 01:34:17 PM HTTP JVM: PhantomUserPageBean.java | ViewEntries 1 Account(s)  
10/23/2016 01:34:17 PM HTTP JVM: PhantomUserPageBean.java | ViewEntryCollection completed successfully...  
10/23/2016 01:34:17 PM HTTP JVM: PhantomUserPageBean.java - doLoadPhantomUserPages accessed: AlienHouse for UserName Field  
10/23/2016 01:34:17 PM HTTP JVM: PhantomUserPageBean.java - doLoadPhantomUserPages accessed: Admin for User URL Field(s) / L  
10/23/2016 01:34:17 PM HTTP JVM: PhantomUserPageBean.java - doLoadPhantomUserPages accessed: xpmyhomepages.xsp for User  
10/23/2016 01:34:17 PM HTTP JVM: ENDING DEBUG | PhantomUserPageBean.java - doLoadPhantomUserPages accessed: xpmyhomep  
10/23/2016 01:34:17 PM HTTP JVM: DEBUG ENDED | PhantomUserPageBean.java - doLoadPanthomPages released access to controls.  
10/23/2016 01:34:17 PM HTTP JVM: Logout Requested Sun Oct 23 13:34:17 EDT 2016  
10/23/2016 01:34:17 PM HTTP JVM: Logging Out... Sun Oct 23 13:34:17 EDT 2016  
10/23/2016 01:34:17 PM HTTP JVM: Session Ended...Sun Oct 23 13:34:17 EDT 2016  
10/23/2016 01:34:17 PM HTTP JVM: Logged out of D?cu Content  
10/23/2016 01:34:17 PM HTTP JVM: BEGIN DEBUG | SecurityAccessOkay started...  
10/23/2016 01:34:17 PM HTTP JVM: docucontent.nsf | SecurityAccessOkay() in LoginAppBean.java Session Obtained...CN=Dököll Solutio  
10/23/2016 01:34:17 PM HTTP JVM: docucontent.nsf | SecurityAccessOkay() in LoginAppBean.java finding D?cuContent.nsf based on Ses  
10/23/2016 01:34:17 PM HTTP JVM: SecurityAccessOkay() in LoginAppBean.java Fetched Database...docucontent.nsf  
10/23/2016 01:34:17 PM HTTP JVM: Getting a database connection...  
10/23/2016 01:34:17 PM HTTP JVM: PhantomUserPageBean.java | SecurityAccessOkay Connected to docucontent.nsf  
10/23/2016 01:34:17 PM HTTP JVM: PhantomUserPageBean.java | SecurityAccessOkay Connected to SecurityAccessView



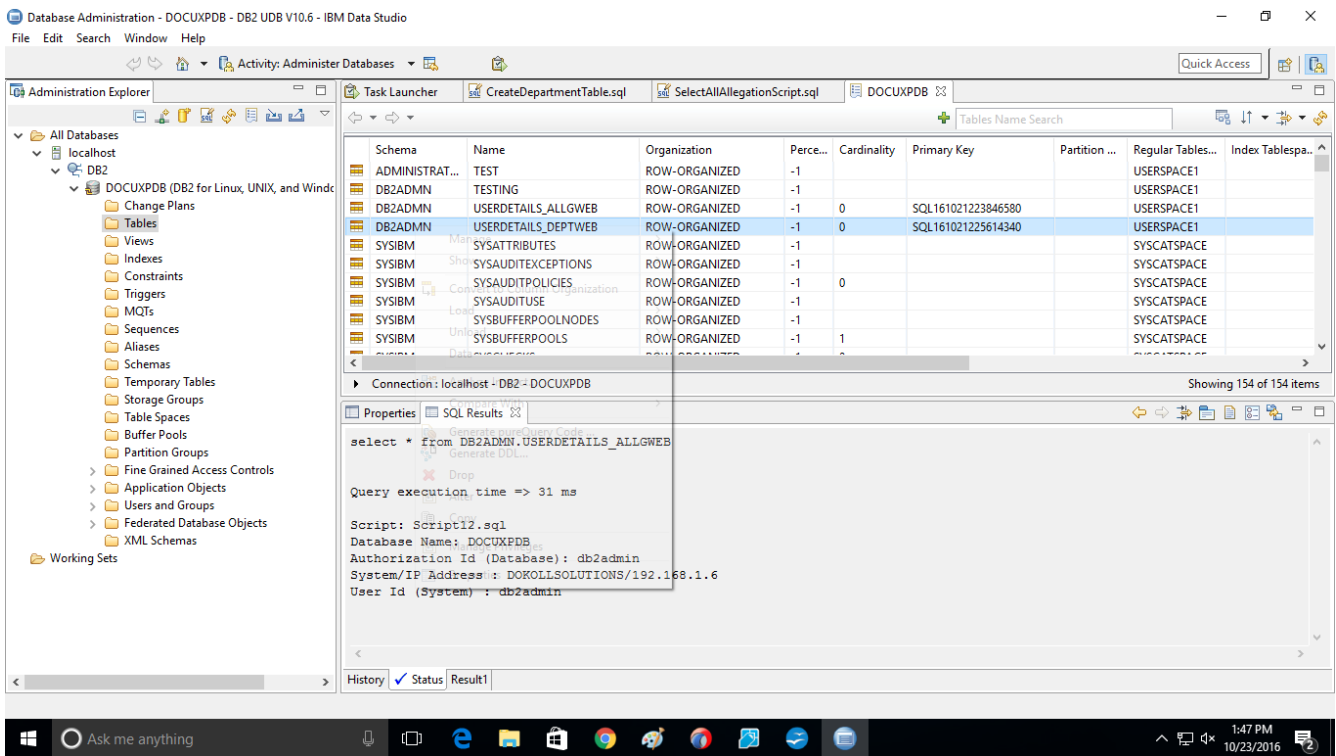
10/23/2016 01:34:17 PM HTTP JVM: PhantomUserPageBean.java | SecurityAccessOkay() - ViewEntryCollection Counts Obtained...  
10/23/2016 01:34:17 PM HTTP JVM: PhantomUserPageBean.java | SecurityAccessOkay() - ViewEntries 1 Account(s)  
10/23/2016 01:34:17 PM HTTP JVM: PhantomUserPageBean.java | SecurityAccessOkay() - ViewEntryCollection completed successfully...  
10/23/2016 01:34:17 PM HTTP JVM: END DEBUG | SecurityAccessOkay releasing access to controls...  
10/23/2016 01:34:17 PM HTTP JVM: User Access Okay() for...xplookandfeel.xsp  
10/23/2016 01:34:17 PM HTTP JVM: User Access Okay() for...xpmhomepages.xsp  
10/23/2016 01:36:50 PM HTTP JVM: after PhaseListener...  
10/23/2016 01:36:50 PM HTTP JVM: loggedIn Phase Listener block, based on Login.java...null  
10/23/2016 01:36:50 PM HTTP JVM: Entering actual connection...  
10/23/2016 01:36:50 PM HTTP JVM: DB2Connector Connection Started...  
10/23/2016 01:36:50 PM HTTP JVM: **java.lang.ClassNotFoundException: COM.ibm.db2.jdbc.app.DB2Driver**  
10/23/2016 01:36:50 PM HTTP JVM: at java.lang.Class.forNameImpl(Native Method)  
10/23/2016 01:36:50 PM HTTP JVM: at java.lang.Class.forName(Class.java:141)  
10/23/2016 01:36:50 PM HTTP JVM: at com.dokoll.solutions.inc.development.Utils.DB2Connector.getConnection(DB2Connector.java:10)  
10/23/2016 01:36:50 PM HTTP JVM: at com.dokoll.solutions.inc.db2.test.DB2CreateDepartmentsBean.doCreateDB2Departments(DB2CreateDepartmentsBean.java:10)  
10/23/2016 01:36:50 PM HTTP JVM: at sun.reflect.NativeMethodAccessorImpl.invoke0(Native Method)  
10/23/2016 01:36:50 PM HTTP JVM: at sun.reflect.NativeMethodAccessorImpl.invoke(NativeMethodAccessorImpl.java:60)  
10/23/2016 01:36:50 PM HTTP JVM: at sun.reflect.DelegatingMethodAccessorImpl.invoke(DelegatingMethodAccessorImpl.java:37)  
10/23/2016 01:36:50 PM HTTP JVM: at java.lang.reflect.Method.invoke(Method.java:611)  
10/23/2016 01:36:50 PM HTTP JVM: at com.ibm.jscrip.types.JavaAccessObject.call(JavaAccessObject.java:321)  
10/23/2016 01:36:50 PM HTTP JVM: at com.ibm.jscrip.types.FBSObject.call(FBSObject.java:161)  
10/23/2016 01:36:50 PM HTTP JVM: at com.ibm.jscrip.ASTTree.ASTCall.interpret(ASTCall.java:197)  
10/23/2016 01:36:50 PM HTTP JVM: at com.ibm.jscrip.ASTTree.ASTProgram.interpret(ASTProgram.java:119)  
10/23/2016 01:36:50 PM HTTP JVM: at com.ibm.jscrip.ASTTree.ASTProgram.interpretEx(ASTProgram.java:139)  
10/23/2016 01:36:50 PM HTTP JVM: at com.ibm.jscrip.JSEExpression.\_interpretExpression(JSEExpression.java:435)  
10/23/2016 01:36:50 PM HTTP JVM: at com.ibm.jscrip.JSEExpression.access\$1(JSEExpression.java:424)  
10/23/2016 01:36:50 PM HTTP JVM: at com.ibm.jscrip.JSEExpression\$2.run(JSEExpression.java:414)  
10/23/2016 01:36:50 PM HTTP JVM: at java.security.AccessController.doPrivileged(AccessController.java:310)  
10/23/2016 01:36:50 PM HTTP JVM: at com.ibm.jscrip.JSEExpression.interpretExpression(JSEExpression.java:410)  
10/23/2016 01:36:50 PM HTTP JVM: at com.ibm.jscrip.JSEExpression.evaluateValue(JSEExpression.java:251)  
10/23/2016 01:36:50 PM HTTP JVM: at com.ibm.jscrip.JSEExpression.evaluateValue(JSEExpression.java:234)  
10/23/2016 01:36:50 PM HTTP JVM: at com.ibm.xsp.javascrip.JavaScriptInterpreter.interpret(JavaScriptInterpreter.java:222)  
10/23/2016 01:36:50 PM HTTP JVM: at com.ibm.xsp.binding.javascript.JavaScriptMethodBinding.invoke(JavaScriptMethodBinding.java:100)  
10/23/2016 01:36:50 PM HTTP JVM: at com.ibm.xsp.application.ActionListenerImpl.processAction(ActionListenerImpl.java:60)  
10/23/2016 01:36:50 PM HTTP JVM: at javax.faces.component.UICommand.broadcast(UICommand.java:324)  
10/23/2016 01:36:50 PM HTTP JVM: at com.ibm.xsp.component.UIEventHandler.broadcast(UIEventHandler.java:366)  
10/23/2016 01:36:50 PM HTTP JVM: at com.ibm.xsp.component.UIViewRootEx.broadcast(UIViewRootEx.java:1535)  
10/23/2016 01:36:50 PM HTTP JVM: at javax.faces.component.UIViewRoot.broadcastEvents(UIViewRoot.java:307)  
10/23/2016 01:36:50 PM HTTP JVM: at javax.faces.component.UIViewRoot.processApplication(UIViewRoot.java:428)  
10/23/2016 01:36:50 PM HTTP JVM: at com.sun.faces.lifecycle.InvokeApplicationPhase.execute(InvokeApplicationPhase.java:94)  
10/23/2016 01:36:50 PM HTTP JVM: at com.sun.faces.lifecycle.LifecycleImpl.phase(LifecycleImpl.java:210)  
10/23/2016 01:36:50 PM HTTP JVM: at com.sun.faces.lifecycle.LifecycleImpl.execute(LifecycleImpl.java:96)  
10/23/2016 01:36:50 PM HTTP JVM: at com.ibm.xsp.controller.FacesControllerImpl.execute(FacesControllerImpl.java:256)  
10/23/2016 01:36:50 PM HTTP JVM: at com.ibm.xsp.webapp.FacesServlet.serviceView(FacesServlet.java:228)



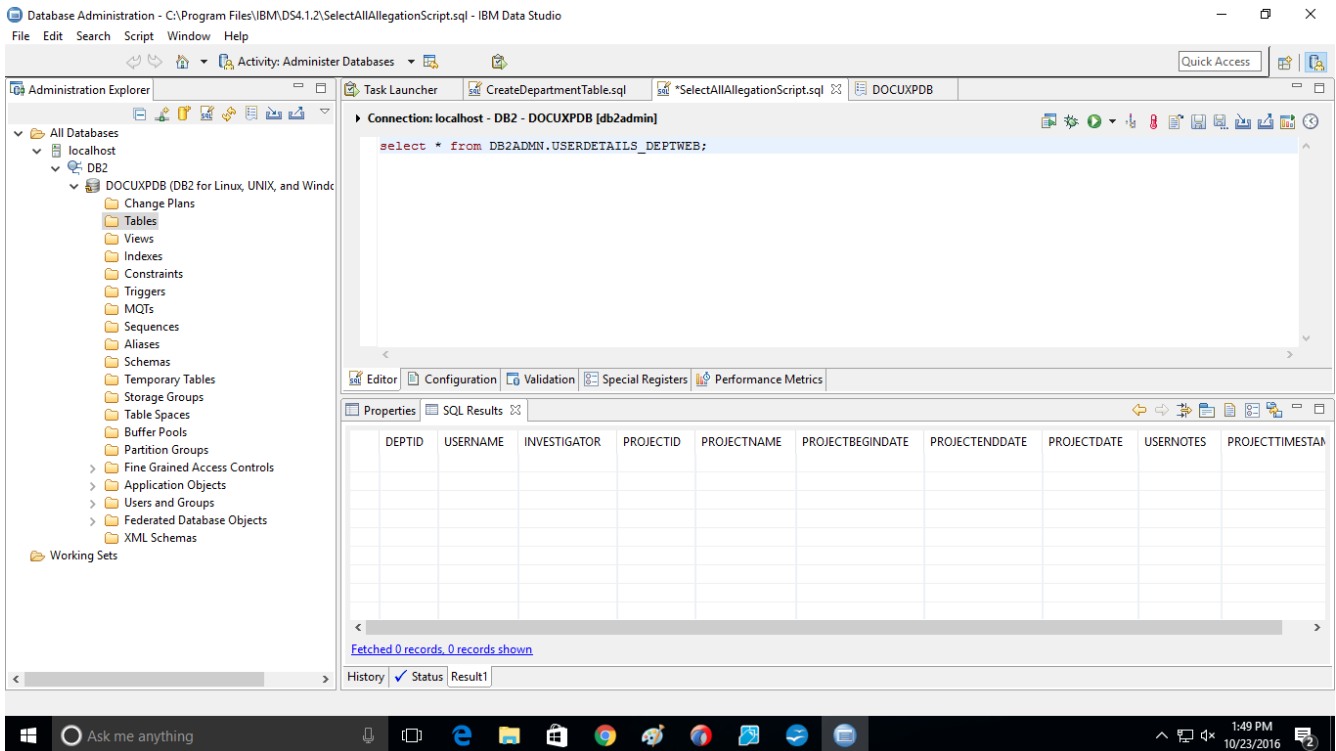
Hopped over to Build Path to try to resolve the issue, placing needed jar files for our IBM DB2 database connections in Lotus Notes Install Directory (**C:\Program Files (x86)\IBM\Notes\Data**)



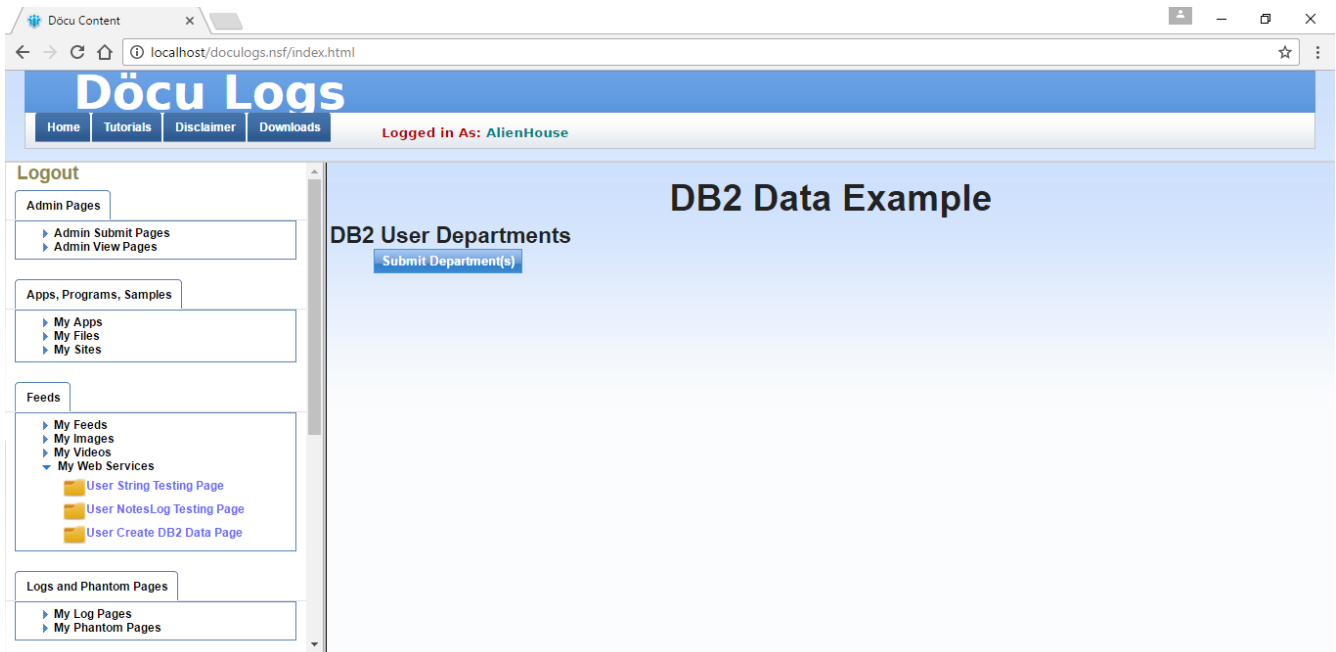
the library entry was not part of the project... let's try to run it again- Before we do that, showing database state this very minute to have a sense what happening



view from IBM Data Studio...



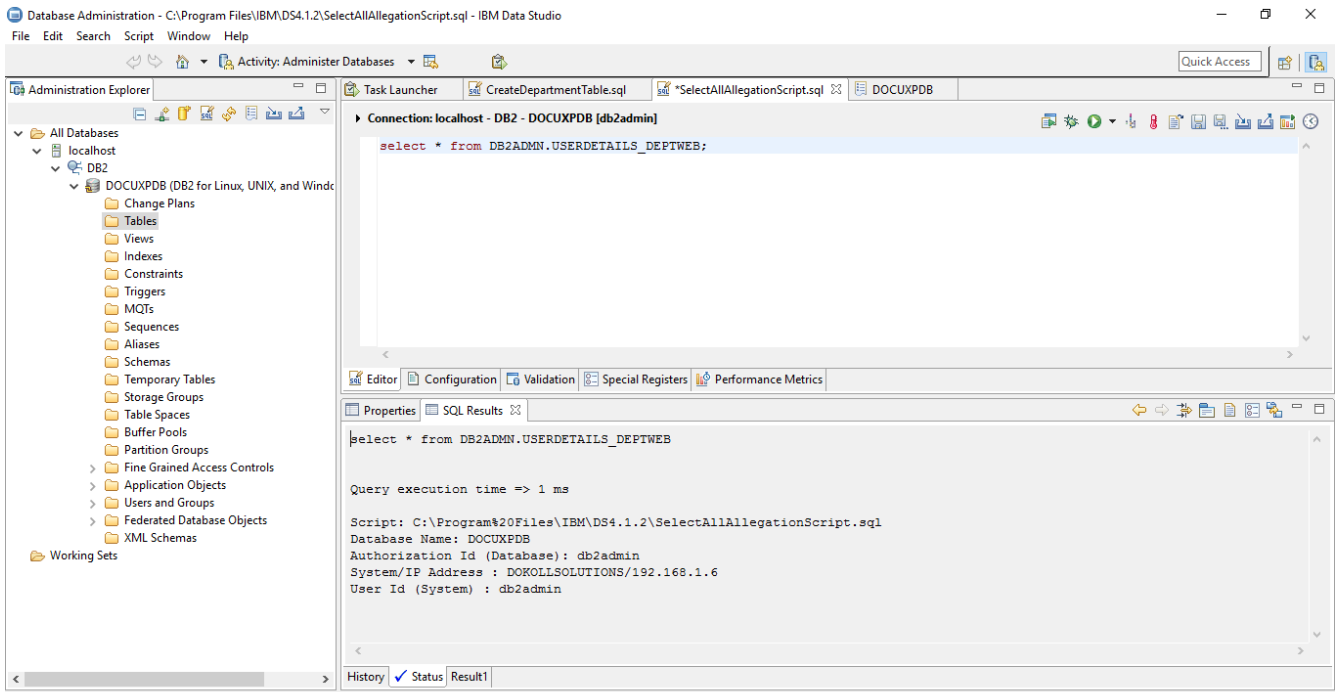
Ran Query and currently table is empty...



Copyright © 2015 - Dokoll Solutions, Inc.



hit the button, this time no errors... let's refresh the results in Data Studio see what's up...



Query is successful, waiting to see the logs

### Miscellaneous Events:

10/23/2016 02:06:33 PM HTTP JVM: at java.lang.reflect.Method.invoke(Method.java:611)  
10/23/2016 02:06:33 PM HTTP JVM: at com.ibm.jscripct.types.JavaAccessObject.call(JavaAccessObject.java:321)  
10/23/2016 02:06:33 PM HTTP JVM: ... 39 more  
10/23/2016 02:06:33 PM HTTP JVM: com.ibm.xsp.webapp.FacesServlet\$ExtendedServletException: javax.faces.FacesException: Error wh  
10/23/2016 02:06:33 PM HTTP JVM: CLFAD0134E: Exception processing XPage request. For more detailed information, please consult er  
10/23/2016 02:08:59 PM HTTP JVM: after PhaseListener...  
10/23/2016 02:08:59 PM HTTP JVM: loggedIn Phase Listener block, based on Login.java...null  
10/23/2016 02:08:59 PM HTTP JVM: Entering actual connection...  
10/23/2016 02:08:59 PM HTTP JVM: DB2Connector Connection Started...  
10/23/2016 02:08:59 PM HTTP JVM: **java.lang.ClassNotFoundException: COM.ibm.db2.jdbc.app.DB2Driver**  
10/23/2016 02:08:59 PM HTTP JVM: at java.lang.Class.forNameImpl(Native Method)  
10/23/2016 02:08:59 PM HTTP JVM: at java.lang.Class.forName(Class.java:141)  
10/23/2016 02:08:59 PM HTTP JVM: at com.dokoll.solutions.inc.development.Utils.DB2Connector.getConnection(DB2Connector.java:  
10/23/2016 02:08:59 PM HTTP JVM: at com.dokoll.solutions.inc.db2.test.DB2AddDataBean.doGetDB2Data(DB2AddDataBean.java:  
10/23/2016 02:08:59 PM HTTP JVM: at sun.reflect.NativeMethodAccessorImpl.invoke0(Native Method)  
10/23/2016 02:08:59 PM HTTP JVM: at sun.reflect.NativeMethodAccessorImpl.invoke(NativeMethodAccessorImpl.java:60)  
10/23/2016 02:08:59 PM HTTP JVM: at sun.reflect.DelegatingMethodAccessorImpl.invoke(DelegatingMethodAccessorImpl.java:37)  
10/23/2016 02:08:59 PM HTTP JVM: at java.lang.reflect.Method.invoke(Method.java:611)  
10/23/2016 02:08:59 PM HTTP JVM: at com.ibm.jscripct.types.JavaAccessObject.call(JavaAccessObject.java:321)  
10/23/2016 02:08:59 PM HTTP JVM: at com.ibm.jscripct.types.FBSObject.call(FBSObject.java:161)  
10/23/2016 02:08:59 PM HTTP JVM: at com.ibm.jscripct.ASTTree.ASTCall.interpret(ASTCall.java:197)  
10/23/2016 02:08:59 PM HTTP JVM: at com.ibm.jscripct.ASTTree.ASTProgram.interpret(ASTProgram.java:119)  
10/23/2016 02:08:59 PM HTTP JVM: at com.ibm.jscripct.ASTTree.ASTProgram.interpretEx(ASTProgram.java:139)  
10/23/2016 02:08:59 PM HTTP JVM: at com.ibm.jscripct.JSEExpression.\_interpretExpression(JSEExpression.java:435)  
10/23/2016 02:08:59 PM HTTP JVM: at com.ibm.jscripct.JSEExpression.access\$1(JSEExpression.java:424)  
10/23/2016 02:08:59 PM HTTP JVM: at com.ibm.jscripct.JSEExpression\$2.run(JSEExpression.java:414)  
10/23/2016 02:08:59 PM HTTP JVM: at java.security.AccessController.doPrivileged(AccessController.java:310)  
10/23/2016 02:08:59 PM HTTP JVM: at com.ibm.jscripct.JSEExpression.interpretExpression(JSEExpression.java:410)  
10/23/2016 02:08:59 PM HTTP JVM: at com.ibm.jscripct.JSEExpression.evaluateValue(JSEExpression.java:251)  
10/23/2016 02:08:59 PM HTTP JVM: at com.ibm.jscripct.JSEExpression.evaluateValue(JSEExpression.java:234)  
10/23/2016 02:08:59 PM HTTP JVM: at com.ibm.xsp.javascript.JavaScriptInterpreter.interpret(JavaScriptInterpreter.java:222)  
10/23/2016 02:08:59 PM HTTP JVM: at com.ibm.xsp.binding.javascript.JavaScriptMethodBinding.invoke(JavaScriptMethodBinding.java:  
10/23/2016 02:08:59 PM HTTP JVM: at com.ibm.xsp.application.ActionListenerImpl.processAction(ActionListenerImpl.java:60)  
10/23/2016 02:08:59 PM HTTP JVM: at javax.faces.component.UICommand.broadcast(UICommand.java:324)  
10/23/2016 02:08:59 PM HTTP JVM: at com.ibm.xsp.component.UIEventHandler.broadcast(UIEventHandler.java:366)  
10/23/2016 02:08:59 PM HTTP JVM: at com.ibm.xsp.component.UIViewRootEx.broadcast(UIViewRootEx.java:1535)  
10/23/2016 02:08:59 PM HTTP JVM: at javax.faces.component.UIViewRoot.broadcastEvents(UIViewRoot.java:307)  
10/23/2016 02:08:59 PM HTTP JVM: at javax.faces.component.UIViewRoot.processApplication(UIViewRoot.java:428)  
10/23/2016 02:08:59 PM HTTP JVM: at com.sun.faces.lifecycle.InvokeApplicationPhase.execute(InvokeApplicationPhase.java:94)  
10/23/2016 02:08:59 PM HTTP JVM: at com.sun.faces.lifecycle.LifecycleImpl.phase(LifecycleImpl.java:210)  
10/23/2016 02:08:59 PM HTTP JVM: at com.sun.faces.lifecycle.LifecycleImpl.execute(LifecycleImpl.java:96)  
10/23/2016 02:08:59 PM HTTP JVM: at com.ibm.xsp.controller.FacesControllerImpl.execute(FacesControllerImpl.java:256)  
10/23/2016 02:08:59 PM HTTP JVM: at com.ibm.xsp.webapp.FacesServlet.serviceView(FacesServlet.java:228)  
10/23/2016 02:08:59 PM HTTP JVM: at com.ibm.xsp.webapp.FacesServletEx.serviceView(FacesServletEx.java:157)  
10/23/2016 02:08:59 PM HTTP JVM: at com.ibm.xsp.webapp.FacesServlet.service(FacesServlet.java:160)  
10/23/2016 02:08:59 PM HTTP JVM: at com.ibm.xsp.webapp.FacesServletEx.service(FacesServletEx.java:138)  
10/23/2016 02:08:59 PM HTTP JVM: at com.ibm.xsp.webapp.DesignerFacesServlet.service(DesignerFacesServlet.java:103)  
10/23/2016 02:08:59 PM HTTP JVM: at com.ibm.designer.runtime.domino.adapter.ComponentModule.invokeServlet(ComponentMod  
10/23/2016 02:08:59 PM HTTP JVM: at com.ibm.domino.xsp.module.nsf.NSFComponentModule.invokeServlet(NSFComponentMod  
10/23/2016 02:08:59 PM HTTP JVM: at com.ibm.designer.runtime.domino.adapter.ComponentModule\$AdapterInvoker.invokeServlet  
10/23/2016 02:08:59 PM HTTP JVM: at com.ibm.designer.runtime.domino.adapter.ComponentModule\$ServletInvoker.doService(Cor  
10/23/2016 02:08:59 PM HTTP JVM: at com.ibm.designer.runtime.domino.adapter.ComponentModule.doService(ComponentModule  
10/23/2016 02:08:59 PM HTTP JVM: at com.ibm.domino.xsp.module.nsf.NSFComponentModule.doService(NSFComponentModule.  
10/23/2016 02:08:59 PM HTTP JVM: at com.ibm.domino.xsp.module.nsf.NSFService.doServiceInternal(NSFService.java:661)  
10/23/2016 02:08:59 PM HTTP JVM: at com.ibm.domino.xsp.module.nsf.NSFService.doService(NSFService.java:481)  
10/23/2016 02:08:59 PM HTTP JVM: at com.ibm.designer.runtime.domino.adapter.LCDEnvironment.doService(LCDEnvironment.java:  
10/23/2016 02:08:59 PM HTTP JVM: at com.ibm.designer.runtime.domino.adapter.LCDEnvironment.service(LCDEnvironment.java:3  
10/23/2016 02:08:59 PM HTTP JVM: at com.ibm.domino.xsp.bridge.http.engine.XspCmdManager.service(XspCmdManager.java:272  
10/23/2016 02:08:59 PM HTTP JVM: Begin statement...  
10/23/2016 02:08:59 PM HTTP JVM: Error while executing JavaScript action expression  
10/23/2016 02:08:59 PM HTTP JVM: com.ibm.xsp.exception.EvaluationExceptionEx: Error while executing JavaScript action expression  
10/23/2016 02:08:59 PM HTTP JVM: at com.ibm.xsp.binding.javascript.JavaScriptMethodBinding.invoke(JavaScriptMethodBinding.java:  
10/23/2016 02:08:59 PM HTTP JVM: at com.ibm.xsp.application.ActionListenerImpl.processAction(ActionListenerImpl.java:60)  
10/23/2016 02:08:59 PM HTTP JVM: at javax.faces.component.UICommand.broadcast(UICommand.java:324)

```

10/23/2016 02:08:59 PM HTTP JVM: at com.ibm.xsp.component.UIEventHandler.broadcast(UIEventHandler.java:366)
10/23/2016 02:08:59 PM HTTP JVM: at com.ibm.xsp.component.UIViewRootEx.broadcast(UIViewRootEx.java:1535)
10/23/2016 02:08:59 PM HTTP JVM: at javax.faces.component.UIViewRoot.broadcastEvents(UIViewRoot.java:307)
10/23/2016 02:08:59 PM HTTP JVM: at javax.faces.component.UIViewRoot.processApplication(UIViewRoot.java:428)
10/23/2016 02:08:59 PM HTTP JVM: at com.sun.faces.lifecycle.InvokeApplicationPhase.execute(InvokeApplicationPhase.java:94)
10/23/2016 02:08:59 PM HTTP JVM: at com.sun.faces.lifecycle.LifecycleImpl.phase(LifecycleImpl.java:210)
10/23/2016 02:08:59 PM HTTP JVM: at com.sun.faces.lifecycle.LifecycleImpl.execute(LifecycleImpl.java:96)
10/23/2016 02:08:59 PM HTTP JVM: at com.ibm.xsp.controller.FacesControllerImpl.execute(FacesControllerImpl.java:256)
10/23/2016 02:08:59 PM HTTP JVM: at com.ibm.xsp.webapp.FacesServlet.serviceView(FacesServlet.java:228)
10/23/2016 02:08:59 PM HTTP JVM: at com.ibm.xsp.webapp.FacesServletEx.serviceView(FacesServletEx.java:157)
10/23/2016 02:08:59 PM HTTP JVM: at com.ibm.xsp.webapp.FacesServlet.service(FacesServlet.java:160)
10/23/2016 02:08:59 PM HTTP JVM: at com.ibm.xsp.webapp.FacesServletEx.service(FacesServletEx.java:138)
10/23/2016 02:08:59 PM HTTP JVM: at com.ibm.xsp.webapp.DesignerFacesServlet.service(DesignerFacesServlet.java:103)
10/23/2016 02:08:59 PM HTTP JVM: at com.ibm.designer.runtime.domino.adapter.ComponentModule.invokeServlet(ComponentModule)
10/23/2016 02:08:59 PM HTTP JVM: at com.ibm.domino.xsp.module.nsf.NSFComponentModule.invokeServlet(NSFComponentModule)
10/23/2016 02:08:59 PM HTTP JVM: at com.ibm.designer.runtime.domino.adapter.ComponentModule$AdapterInvoker.invokeServlet
10/23/2016 02:08:59 PM HTTP JVM: at com.ibm.designer.runtime.domino.adapter.ComponentModule$ServletInvoker.doService(Cor
10/23/2016 02:08:59 PM HTTP JVM: at com.ibm.designer.runtime.domino.adapter.ComponentModule.doService(ComponentModule)
10/23/2016 02:08:59 PM HTTP JVM: at com.ibm.domino.xsp.module.nsf.NSFComponentModule.doService(NSFComponentModule)
10/23/2016 02:08:59 PM HTTP JVM: at com.ibm.domino.xsp.module.nsf.NSFService.doServiceInternal(NSFService.java:661)
10/23/2016 02:08:59 PM HTTP JVM: at com.ibm.domino.xsp.module.nsf.NSFService.doService(NSFService.java:481)
10/23/2016 02:08:59 PM HTTP JVM: at com.ibm.designer.runtime.domino.adapter.LCDEnvironment.doService(LCDEnvironment.java:3
10/23/2016 02:08:59 PM HTTP JVM: at com.ibm.designer.runtime.domino.adapter.LCDEnvironment.service(LCDEnvironment.java:3
10/23/2016 02:08:59 PM HTTP JVM: at com.ibm.domino.xsp.bridge.http.engine.XspCmdManager.service(XspCmdManager.java:272)
10/23/2016 02:08:59 PM HTTP JVM: Caused by:
10/23/2016 02:08:59 PM HTTP JVM: com.ibm.jscrip... t.InterpreterException: Script interpreter error, line=1, col=16: Error calling method 'doGet
10/23/2016 02:08:59 PM HTTP JVM: at com.ibm.jscrip... t.types.JavaAccessObject.call(JavaAccessObject.java:334)
10/23/2016 02:08:59 PM HTTP JVM: at com.ibm.jscrip... t.types.FBSObject.call(FBSObject.java:161)
10/23/2016 02:08:59 PM HTTP JVM: at com.ibm.jscrip... t.ASTTree.ASTCall.interpret(ASTCall.java:197)
10/23/2016 02:08:59 PM HTTP JVM: at com.ibm.jscrip... t.ASTTree.ASTProgram.interpret(ASTProgram.java:119)
10/23/2016 02:08:59 PM HTTP JVM: at com.ibm.jscrip... t.ASTTree.ASTProgram.interpretEx(ASTProgram.java:139)
10/23/2016 02:08:59 PM HTTP JVM: at com.ibm.jscrip... t.JSEExpression._interpretExpression(JSEExpression.java:435)
10/23/2016 02:08:59 PM HTTP JVM: at com.ibm.jscrip... t.JSEExpression.access$1(JSEExpression.java:424)
10/23/2016 02:08:59 PM HTTP JVM: at com.ibm.jscrip... t.JSEExpression$2.run(JSEExpression.java:414)
10/23/2016 02:08:59 PM HTTP JVM: at java.security.AccessController.doPrivileged(AccessController.java:310)
10/23/2016 02:08:59 PM HTTP JVM: at com.ibm.jscrip... t.JSEExpression.interpretExpression(JSEExpression.java:410)
10/23/2016 02:08:59 PM HTTP JVM: at com.ibm.jscrip... t.JSEExpression.evaluateValue(JSEExpression.java:251)
10/23/2016 02:08:59 PM HTTP JVM: at com.ibm.jscrip... t.JSEExpression.evaluateValue(JSEExpression.java:234)
10/23/2016 02:08:59 PM HTTP JVM: at com.ibm.xsp.javascrip... t.JavaScriptInterpreter.interpret(JavaScriptInterpreter.java:222)
10/23/2016 02:08:59 PM HTTP JVM: at com.ibm.xsp.binding.javascrip... t.JavaScriptMethodBinding.invoke(JavaScriptMethodBinding.j
10/23/2016 02:08:59 PM HTTP JVM: ... 26 more
10/23/2016 02:08:59 PM HTTP JVM: Caused by:
10/23/2016 02:08:59 PM HTTP JVM: java.lang.NullPointerException
10/23/2016 02:08:59 PM HTTP JVM: at com.dokoll.solutions.inc.db2.test.DB2AddDataBean.doGetDB2Data(DB2AddDataBean.java:
10/23/2016 02:08:59 PM HTTP JVM: at sun.reflect.NativeMethodAccessorImpl.invoke0(Native Method)
10/23/2016 02:08:59 PM HTTP JVM: at sun.reflect.NativeMethodAccessorImpl.invoke(NativeMethodAccessorImpl.java:60)
10/23/2016 02:08:59 PM HTTP JVM: at sun.reflect.DelegatingMethodAccessorImpl.invoke(DelegatingMethodAccessorImpl.java:37)
10/23/2016 02:08:59 PM HTTP JVM: at java.lang.reflect.Method.invoke(Method.java:611)
10/23/2016 02:08:59 PM HTTP JVM: at com.ibm.jscrip... t.types.JavaAccessObject.call(JavaAccessObject.java:321)
10/23/2016 02:08:59 PM HTTP JVM: ... 39 more
10/23/2016 02:08:59 PM HTTP JVM: com.ibm.xsp.webapp.FacesServlet$ExtendedServletException: javax.faces.FacesException: Error wh
10/23/2016 02:08:59 PM HTTP JVM: CLFAD0134E: Exception processing XPage request. For more detailed information, please consult er

```

Bunch of errors... let's try to see why we are still getting a Class error for connection...